

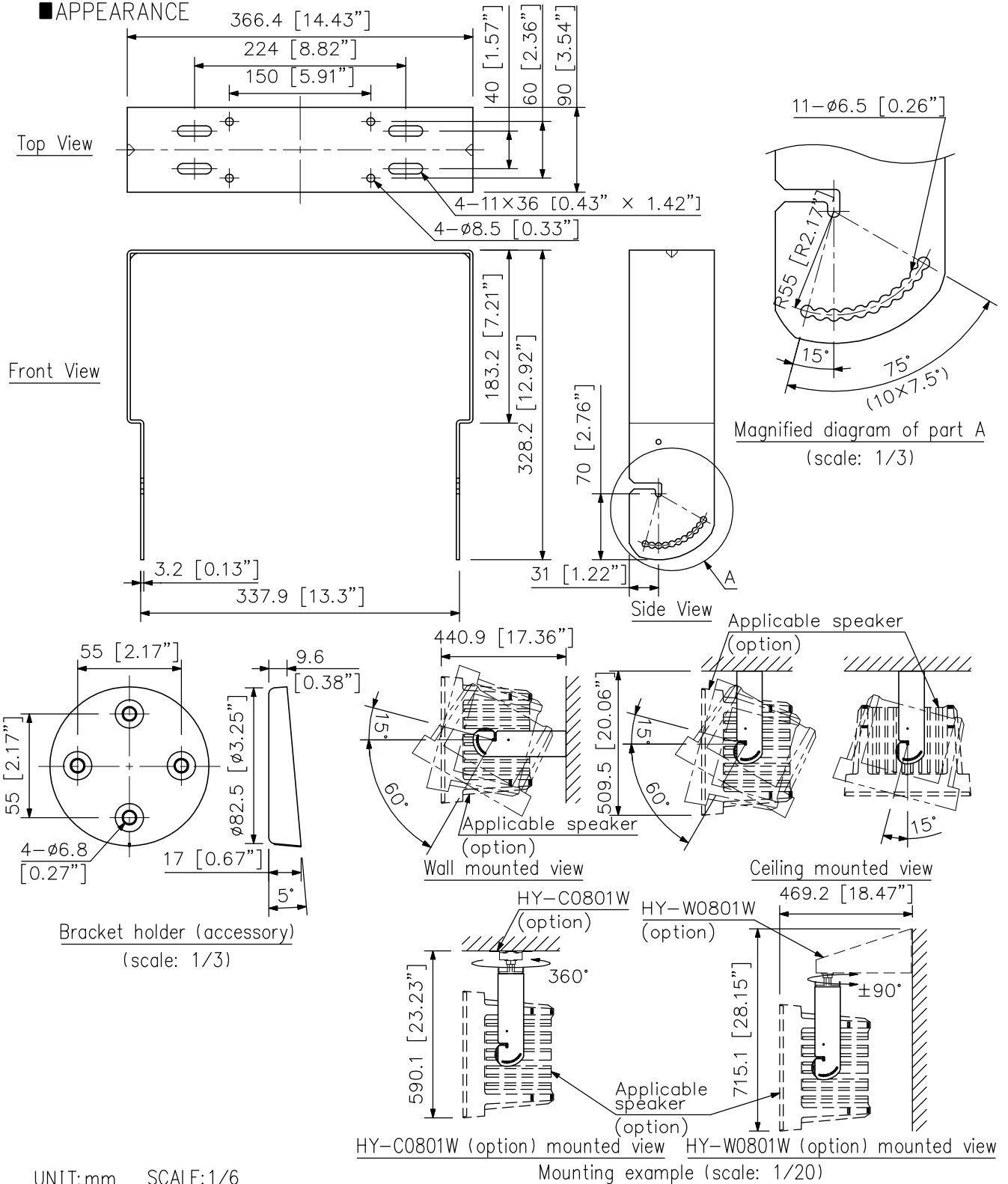
DESCRIPTION

The HY-1200VW Mount Bracket is designed to mount speaker system to a wall or ceiling in a vertical configuration. It allows the speaker orientation angle to be adjusted from 15° upward to 60° downward when mounted on a wall, and from 15° upward to 90° downward when mounted to a ceiling.

SPECIFICATIONS

Finish	Steel plate, white, paint
Dimensions	366.4 (W) × 328.2 (H) × 90 (D) mm (14.43" × 12.92" × 3.54")
Weight	2.2 kg (4.85 lb)
Accessory	Bracket holder ...2, Bracket holder mounting screw ...4, Speaker mounting screw ...4, Nut for the optional bracket ...4, Washer for the optional bracket ...4
Option	Ceiling mount bracket: HY-C0801W, Wall mount bracket: HY-W0801W
Applicable Speaker (option)	HS-120W, HS-1200WT

APPEARANCE



UNIT:mm SCALE:1/6