



COMPANY PROFILE

TOA Electronics





Smiles *for the* Public

When people gain reassurance,
reliability and emotion,
that brings out various smiles in people.
TOA is a company that makes their smiles
come true within the society they inhabit
and provides irreplaceable values
that cheers them up even more,
thanks to our audio notification capabilities.

Smiles for the Public

3 Three Business Domains

Public Safety
Public Communication
Public Space Design

Audio Notification Capabilities

TOA provides a triple header of values to society “reassurance”, “reliability” and “emotion” through our audio notification capabilities.

Public Safety

Public Communication

Public Space Design



Public Safety

Horn Array Speaker (Emergency PA system, Koto Ward, Tokyo)

Public Safety

Reassurance

In the realm of “Public Safety,” in order to allow people to spend their daily lives with peace of mind, we endeavor to protect as many people as possible from natural disasters, crime, accidents, and other public dangers, working to provide solutions that will help achieve security and safety in society.

High-performance Speakers for Disaster Prevention (Sendai City, Miyagi)

Sendai City was badly affected by the Great East Japan Earthquake. Using this experience, they try to provide information to ensure the necessary information is passed on rather than just sending it out. TOA established an outdoor emergency public-address system to convey tsunami information as well as organizing workshops to help publicize how to mitigate and prevent disasters; collaborating with government and residents as a team effort.



Town Recorder Remote Viewing Service (Keisei Bus Co., Ltd.)

The Keisei Bus Company is based in Ichikawa City, Chiba and offers reassurance to passengers awaiting buses at bus stops via TOA’s remotely operated system, which monitors video images of each bus stop and provides accurate announcements. Moreover, the system also boosts local anti-crime measures by complying with Chiba prefectural relations in terms of security cameras.



Airport Passenger Announcement System (For the international passenger terminal at Tokyo International Airport)

Public Communication

Reliability

In the realm of "Public Communication," in order to build trust among people in everyday life, we overcome disparities of time, space, language and age, offering solutions for more convenient, more comfortable social communication.

Airport Passenger Announcement System (For the international passenger terminal at Tokyo International Airport)

The international passenger terminal of Tokyo International Airport has been spotlighted as a gateway to Europe, America and East Asia from the Tokyo metropolitan area. TOA developed a PA system capable of conveying necessary information such as emergency and flight information for various users of different nationalities and ages within large airport facilities.



PA system on a railway car Washington Metro 7000-series Train Cars [Made by Kawasaki Heavy Industries, Ltd.]

Providing passengers with a safer and more comfortable service, TOA's technology supports many aspects of railway operation, including a PA system on the train conveying announcements to each train car from the vehicle cockpit and a security camera system to ensure on-train safety, as well as an on-board and station electric destination indicator, etc.

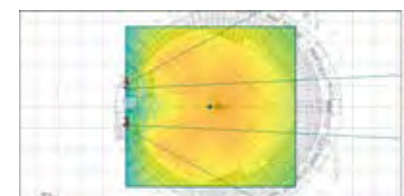
Public Space Design

Emotion

In the realm of "Public Space Design," toward the goal of stirring people's hearts and emotions, from everyday small pleasures to extraordinary experiences, we provide solutions that achieve the kind of spatial performance capable of enriching people's minds.

Stadium Sound System (ZOZO Marine Stadium)

ZOZO Marine Stadium is well-known to many citizens as the home ground of a professional baseball team as well as a concert and sporting venue. TOA helps provide sound support for audiences to enjoy professional baseball matches and other events comfortably, thanks to the renovation of its acoustic facility.



Our diverse sound system design, amassed through extended sound creation

We deliver optimal sound, exploiting accumulated data and expertise, including precise sound field simulation and digital measurement technology, etc.



TOA's Global Expansion

We develop localized business operations under the catchphrase: “5 TOAs in the World.”

TOA develops products while retaining roots in the local community; feeling the culture and climate in its bones and establishing an optimal regional network, including production, marketing and after-sales service.

We believe we can only deliver value that people really seek worldwide after implementing such localized business operations.

There are now five stages of TOA in the world: Establishing product development, production and sales bases in “Japan,” “China & East Asia,” “Asia & Pacific,” “Europe, Middle East & Africa” and “The Americas,” we will continue to grow.



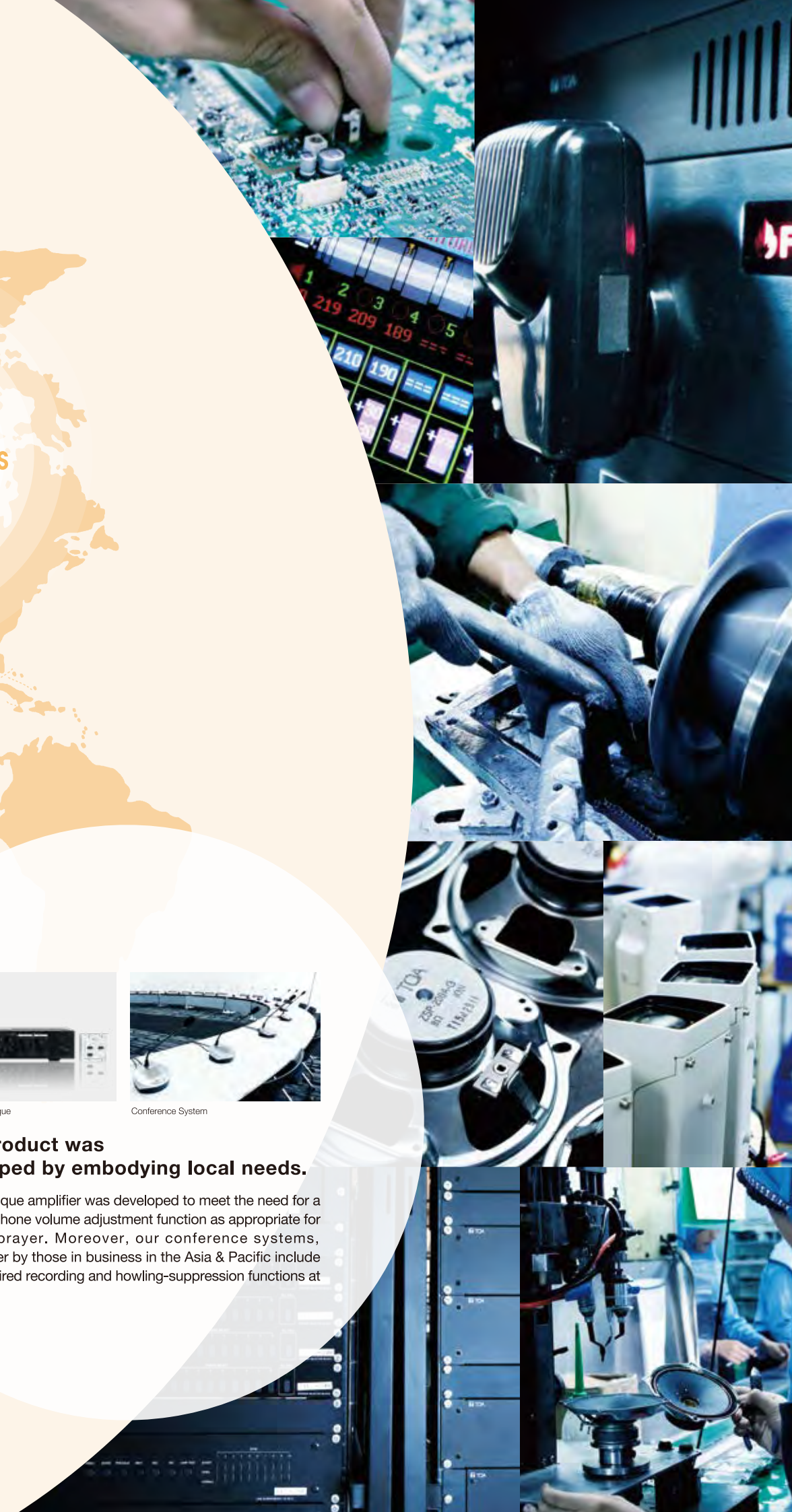
Amplifier for mosque



Conference System

This product was developed by embodying local needs.

TOA's mosque amplifier was developed to meet the need for a fine microphone volume adjustment function as appropriate for times of prayer. Moreover, our conference systems, sought-after by those in business in the Asia & Pacific include highly required recording and howling-suppression functions at low cost.





Carbon microphone (reproduction) that supported our earlier times

A carbon microphone was developed to capture sound via the vibration of carbon particles, obtaining the carbons required by boiling sugar. Even when supplies were scarce, we were still able to obtain valuable sure supplies, which allowed us to produce carbon microphones and evidence shows that microphones were needed at the time.

The Spirit of Foundation

Retaining a perspective for the next generation

In 1934, TOA was established in Kobe as TOA Electric Manufacturing Company. Our founder, Tsunetaro Nakatani, met and joined forces with a young engineer to produce microphones, which paved the way to found the company. TOA has since grown from a small factory to a global specialist manufacturer over time; capable of producing numerous products, both nationally and globally unique. That was because we retain a passion for craftsmanship and a forward-looking attitude at all times. The spirit of this foundation has since been handed down to the current TOA.

Wide-ranging Innovative Products produced by TOA

Many products that have underpinned our business have design concepts which remain applicable today, reflecting the level of innovation achieved at the time. Above all, Japan's first reflex trumpet speaker and a world-first electric megaphone have been further modified on an ongoing basis and catalyzed long-term company growth.



Reflex Trumpet Speaker (since 1947)



Electric Megaphone (since 1954)



TOA's Development and Production System

Our Global Development System, producing innovative products

TOA Group's developing base is headquartered at Takarazuka R&D Center in Japan, housing all sorts of departments and development activities, including product development, quality-assurance and design, etc. as well as an R&D department of basic technologies. We also deployed overseas bases of the Asia-Pacific R&D Center in Indonesia and the Dynatron Industrial Co., Ltd. R&D Center in Taiwan and produce attractive regional products working alongside our global production sites. With each site operating independently, information is linked to an IT network, within which we can share technologies and purchase parts as a single package. We maintain the development system of local products produced from freewheeling thinking and efficiency as the overall TOA Group.

Asia-Pacific R&D Center

In 2012, the Asia-Pacific R&D Center was founded as TOA's first overseas development center in the suburbs of Jakarta, the Indonesian capital. Local engineers develop products within a fully-appointed development environment.

TOA's Installations

TOA products play active roles in a range of global scenes.



KDN Putrajaya, Kuala Lumpur
[Government Facility]

KDN Putrajaya, the country's administrative government agencies recently relocated and have upgraded their 21 years' old TOA SX-1000 matrix PA system to the latest VX-3000 IP matrix PA system. The nine blocks of office building are decentralized and can be managed over fibre-optic infrastructure on touchscreen interfaces.



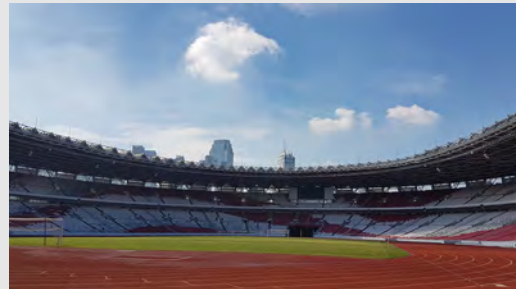
MATSUSHIMA ICHINOBO
[Hotel]

The MATSUSHIMA Convention Hall installed in MATSUSHIMA ICHINOBO. We help establish a sound environment conducive for events within the hotel, including a range of conventions and wedding receptions.



Marina Bay Financial Centre Tower [Complex]

Marina Bay Financial Centre Tower is a huge commercial complex, symbolic of Singapore. Within its office tower, TOA's broadcasting system and speakers support efforts to establish a safe and comfortable environment.



Gelora Bung Karno (GBK) Stadium
[Sports Facility]

Newly renovated GBK Stadium over 76,000 people played host for the 2018 Asian Game and TOA system was the one that accompanied the participants, audiences as they rock the stadium with their roars, cheering for their favorite team. TOA voice evacuation system, FV-200 ensures safety for all in event of emergency and TOA array speakers, subwoofers, coaxial speaker, mixers and amplifiers made sure every exciting moments are not missed.

Jakarta Masjid Istiqlal
[House of Worship]

The sixth largest mosque in the world, biggest in Southeast Asia. Capacity of over 120,000 worshipping pilgrims. The Masjid Istiqlal upgraded the site and renewed its sound system.



Cartoon Network Amazone
[Theme Park]

Cartoon Network Amazone is one of the largest family-oriented water parks in Asia with Cartoon Network as theme; located in Pattaya, Thailand. TOA supports the establishment of a broadcasting system, including line array speakers on the main stage.

Yishun Community Hospital
[Medical Facility]

Yishun Community Hospital is one of Singapore's largest community hospitals to provide rehabilitation services. TOA's PA and Emergency Broadcast systems including speakers serves the entire facility.



Yale-NUS College
[Educational Facility]

Yale-NUS College is an institution founded by Yale University of the U.S. in collaboration with the National University of Singapore, which was the first college founded abroad. Our IP intercom system plays an active role as an on-campus communication tool.



ION ORCHARD
[Commercial Facility]

ION ORCHARD is a huge shopping mall on Orchard Road in Singapore. Our Public address / Emergency broadcast system delivers the required information, while line array speakers support their event operations outside the building.

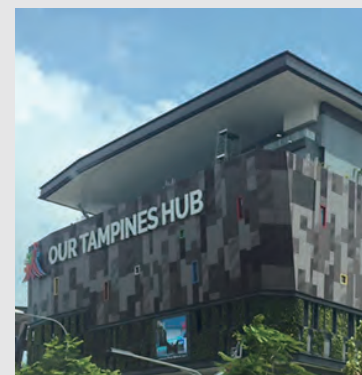
Siam Premium Outlets, Bangkok
[Commercial Facility]

The first Siam Premium Outlets in Thailand, located 10 mins from Bangkok Suvarnabhumi International Airport. It is developed on a 25 hectares land with a gross floor area of about 50,000 sqm. TOA SX-2000 and M-9000M2 is installed for sound, announcement and BGM. Ceiling speakers, garden speakers and weatherproof wide dispersion speakers covers the entire site.



SGI Asia Culture and Educational Centre (ACEC)
[House of Worship]

Situated in Johor Bahru, Malaysia, ACEC is the biggest training centre in Asia, outside of Japan for Soka Gakkai International. Our HX-7 was proposed and installed alongside with various amplifiers, speakers and wireless microphones to meet their need.



Our Tampines Hub
[Commercial Facility]

Singapore's first-ever integrated community and lifestyle hub. The vicinity consists of a variety of sports facilities, library, retail and F&B shops, community clubs and amenities. Our PA and Emergency Broadcast systems including speakers serves the entire hub.

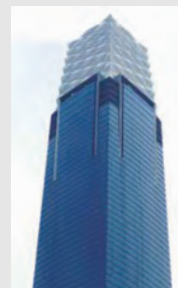
Balikpapan Islamic Center
[House of Worship]

Located on Indonesian island of Borneo, the Balikpapan Islamic Center can host up to 10,000 worshippers indoor and outdoor. A extensive range of TOA speakers lined the entire 11,040m² together with our digital mixers and digital power amplifiers.



Exchange 106, Kuala Lumpur
[Commercial Facility]

Malaysia's tallest skyscraper, Exchange 106 located in the heart of new Tun Razak Exchange (TRX) financial and business hub. It is 106-storey including 93 column-free office floors. TOA provided an extensive PA system and some 5,000 loudspeakers for this project.



Other Installations

- **Sports Facilities** Hanazono Rugby Stadium, Hanshin Koshien Stadium, Kyocera Dome Osaka, STADE DU FRANCE
- **Hotels** The Westin Awaji Island, The Capella Singapore, ANA Crowne Plaza Kobe, MGM Casino & Hotel Vietnam
- **Transport** Narita International Airport, Kansai International Airport, Seoul Subway, NSW Railways, Ipoh International Airport
- **Educational Facilities** Pathlight School Singapore, Natural History Museum, SAKUSHIN GAKUIN, Singapore Management University
- **Commercial Facilities** Rolls Royce Testing Facilities Singapore, Audi Centre Sydney, KLCC Exxon Mobil Tower, TIMES Square Vietnam
- **Others** Kobe City Government Office, SAPPORO TV Tower, Vienna State Opera House, Sri Lanka Customs

Management Policy

[**Basic Management Policy**]
(Three Confidences)



TOA continues to meet
our corporate social responsibilities
for the future.

Quality Policy

TOA has earned global recognition for our total quality management.

TOA acquired an international standard certification for the ISO9001 quality management system. Our total quality management, from design, development and production to after-sales service, has earned global recognition. Moreover, we promote eco-friendly technology and product development, which has also helped us acquire the ISO14001 international standard certification for environmental management.



JMI-0020
ISO9001
Headquarters
Takarazuka R&D Center
Tokyo Branch
Osaka Branch

JQA-EM1400
ISO14001
Takarazuka R&D Center

Environmental Policy

We address environmentally aware efforts.

TOA Environmental Philosophy

TOA recognizes global environmental preservation as one of our key management challenges and we all proactively engage in environmentally aware actions in our corporate activities.



Based on the letter T, the TOA logo symbolizes our four corporate objectives:

PROGRESSIVE

To continuously incorporate the high technology and pursue a high degree of specialization.

MODERN

To respond appropriately and quickly to rapid changes occurring in society.

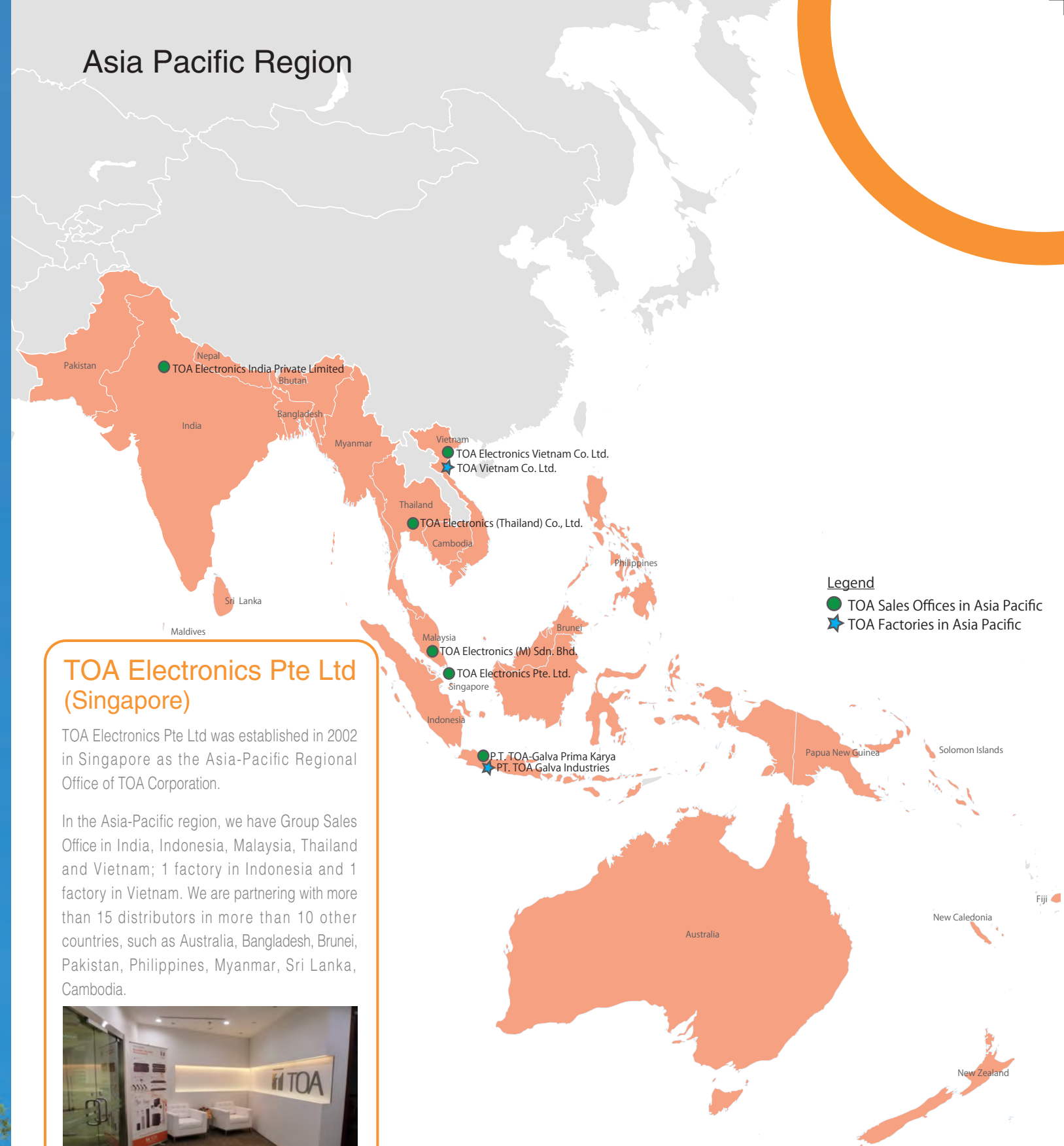
INTERNATIONAL

To make a global contribution in the field of communication through sound.

DYNAMIC

To make an effort as individuals to create products of the highest quality and value.

Asia Pacific Region



TOA Electronics Pte Ltd (Singapore)

TOA Electronics Pte Ltd was established in 2002 in Singapore as the Asia-Pacific Regional Office of TOA Corporation.

In the Asia-Pacific region, we have Group Sales Office in India, Indonesia, Malaysia, Thailand and Vietnam; 1 factory in Indonesia and 1 factory in Vietnam. We are partnering with more than 15 distributors in more than 10 other countries, such as Australia, Bangladesh, Brunei, Pakistan, Philippines, Myanmar, Sri Lanka, Cambodia.

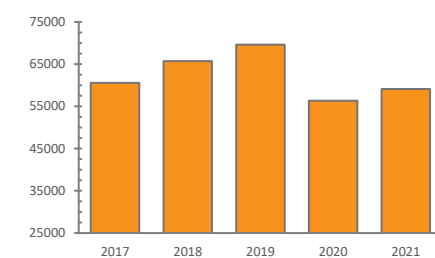


Profile

Company Name : TOA Electronics Pte Ltd
 Established : 01 April 2002
 Capital : S\$170,000
 Office : 491B River Valley Road #19-03/04
 Valley Point Office Tower
 Singapore 248373
 Contact : Tel: (65) 6835 9119
 Fax: (65) 6825 9559
 Website : www.toa.com.sg

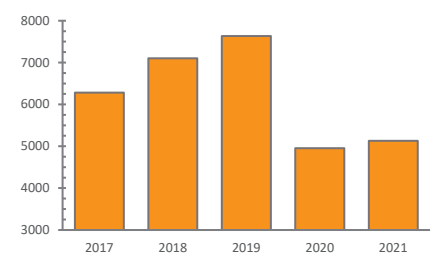
Financial Data in Asia Pacific Region

Net Sales (Consolidated)



<Net Sales> 1,000 USD
60,571 65,725 69,616 56,336 59,119

Net Profit (Consolidated)



<Net Sales> 1,000 USD
6,280 7,102 7,632 4,827 5,130



TOA Electronics Pte Ltd

www.toa.com.sg

 Like us on Facebook
facebook.com/TOAasiapacific

Data is accurate at time of printing.
Printed in Singapore (65) 865-0122-03

